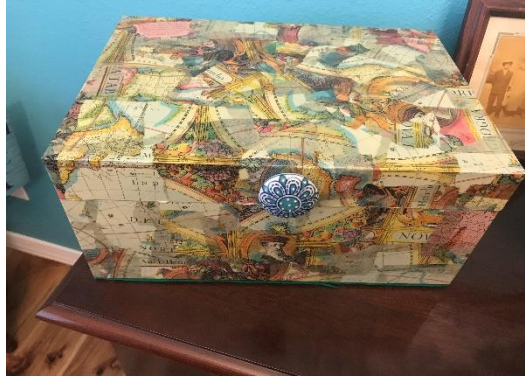


Modge Podge Boxes

Major Gaylene Yardley



Supplies

Boxes of any shape or size

Modge Podge Matte

Old pictures

Paint

Spray gloss Modge Podge

Paint brushes



Instructions

- *Paint your box with any color you like.*
- *Cut out the pictures you plan to adhere to your box.*
- *Using a clean paint brush, brush the Modge Podge onto the box wherever you are going to adhere pictures.*
- *Brush Modge Podge liberally onto the pictures and adhere to the box.*
- *When the photos are dry, spray entire box with the Modge Podge gloss and let dry.*
- *Enjoy your box!*