

# *The Best Time for New Beginnings*

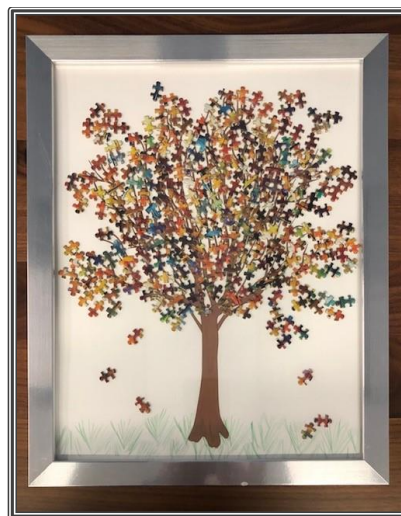
## DIY Puzzle Piece Wall Décor

By Margaret Grieco, Territorial Women's Ministries Department

- ◆ Start with a 16x20 canvas (or smaller) and either paint a tree trunk with branches or print out a tree from the website (link below). White or cream card stock works as well if you would like a smaller canvas.
- ◆ You can purchase an inexpensive puzzle online or in the store (link below). One large puzzle can be used for multiple trees!
- ◆ Use a clear tacky glue to adhere random puzzle pieces in between the branches, avoiding the edge pieces (avoid straight lines). You can also cut a few of the pieces to get them to fit how you want them.
- ◆ You can add a little green grass with a colored pencil and then find an inexpensive frame and hang your beautiful new creation!

[Tree Prints Link](#)   [Puzzle Link](#)   [Tacky Glue](#)   [Canvas Link](#)

**“Behold, I am doing something new; now it springs forth, do you not perceive it? I will make a way in the wilderness and rivers in the desert.” ~ Isaiah 43:19**



## Puzzle Tree Craft - Supplies Needed

**Tree Graphic**

**Colored Pencils**

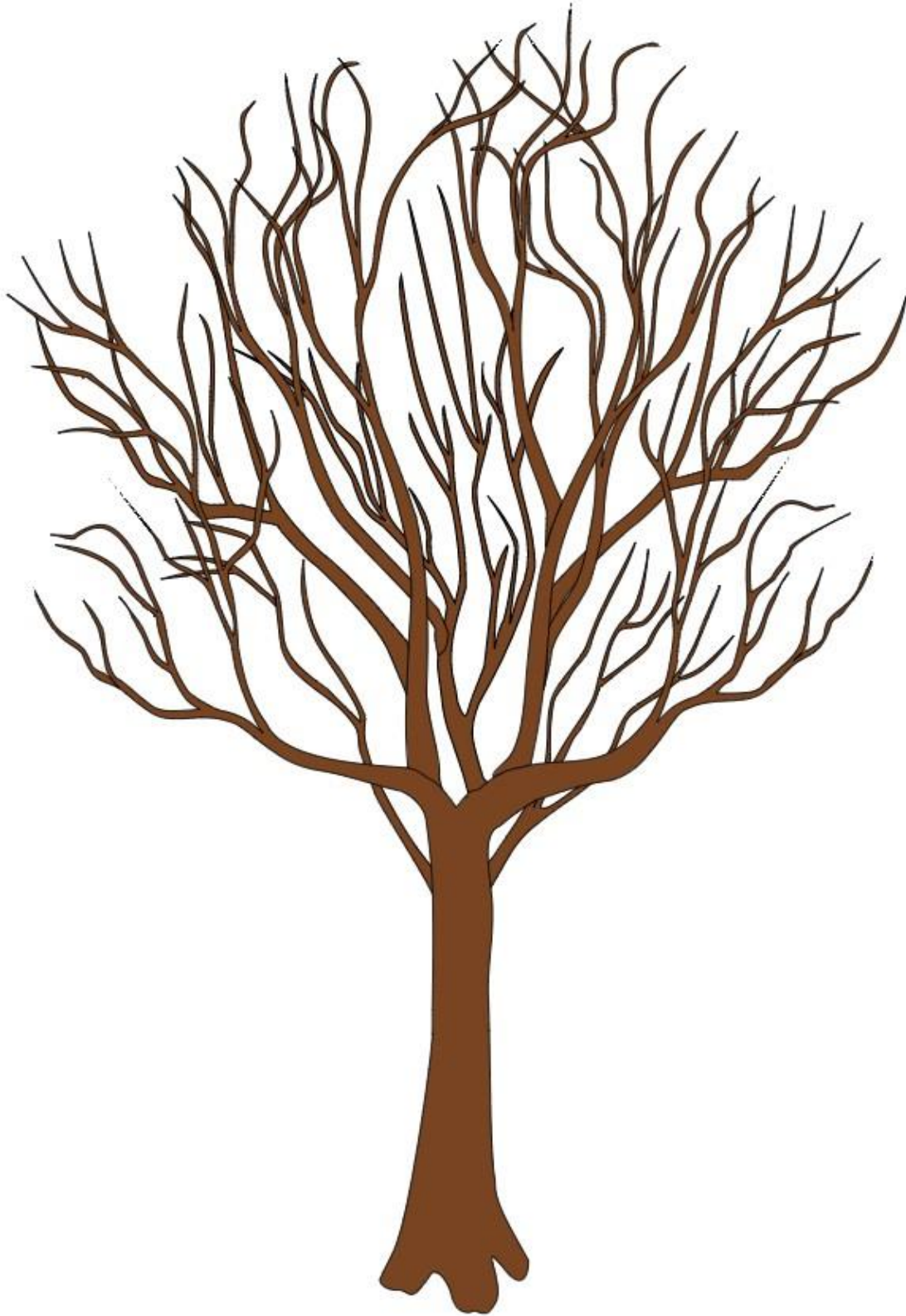
**Mini Puzzle (Fall colors or other)**

**Tacky Glue**

**Picture Frame (size is based on your printout)**



**Puzzle Tree Craft - Tree Graphic**





# Puzzle Tree Craft – The Progress!

